

On the ground
In the know
Talking to people

Pepinini
Lithium Limited

Rebecca Holland Kennedy
Managing Director



SydneyResourcesRound-up

8-10 May 2018

Lithium Supply - Demand - Who to believe?

❑ ***Production Surplus 135kt in 2025*** – *Morgan Stanley Feb 18*

❑ ***Production Shortfall 496kt in 2026***

Dr David Deak Lithium Americas(LAC) Sep 2017(formerly Tesla engineer)

The lithium market is forecast to reach over 3 million tonnes LCE (US\$30 billion) by 2028



Why does the world need so much Lithium?

- ❑ **BMW to sign 10 year contract with Lithium supplier**
- ❑ **34 billion euros - \$A53billion**
- ❑ **Competition with Tesla for electric cars**



That's what Markus Duesmann, BMW's head of supply chain, told Germany's [Frankfurter Allgemeine Zeitung](#) last week (12 Feb 18):
"The aim is to secure the supply all the way down to the level of the mine, for 10 years. The contracts are ready to be signed,".



Dyson's Bid to Build an Electric Car

British inventor Sir James Dyson announced this week that his company will spend more than \$2.7 billion to build a swoon-worthy, zero-emissions vehicle by 2020.

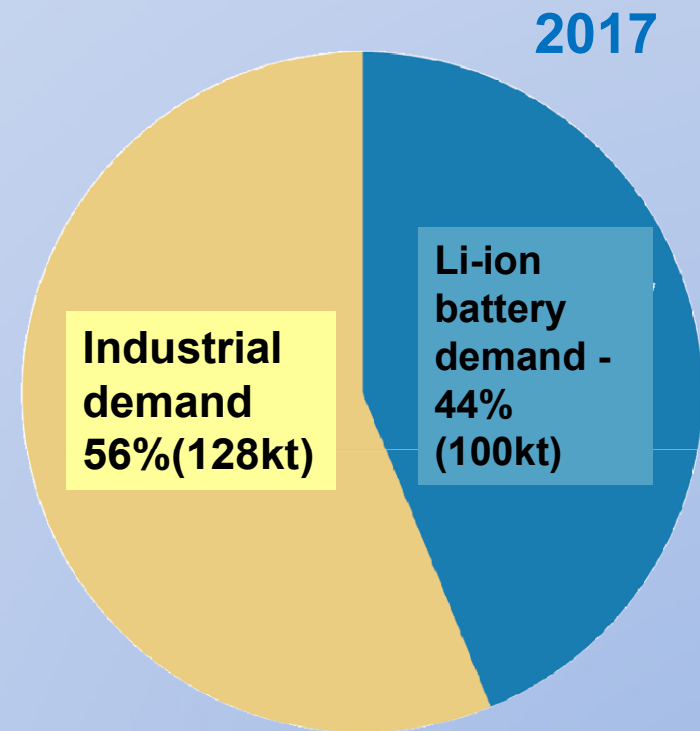
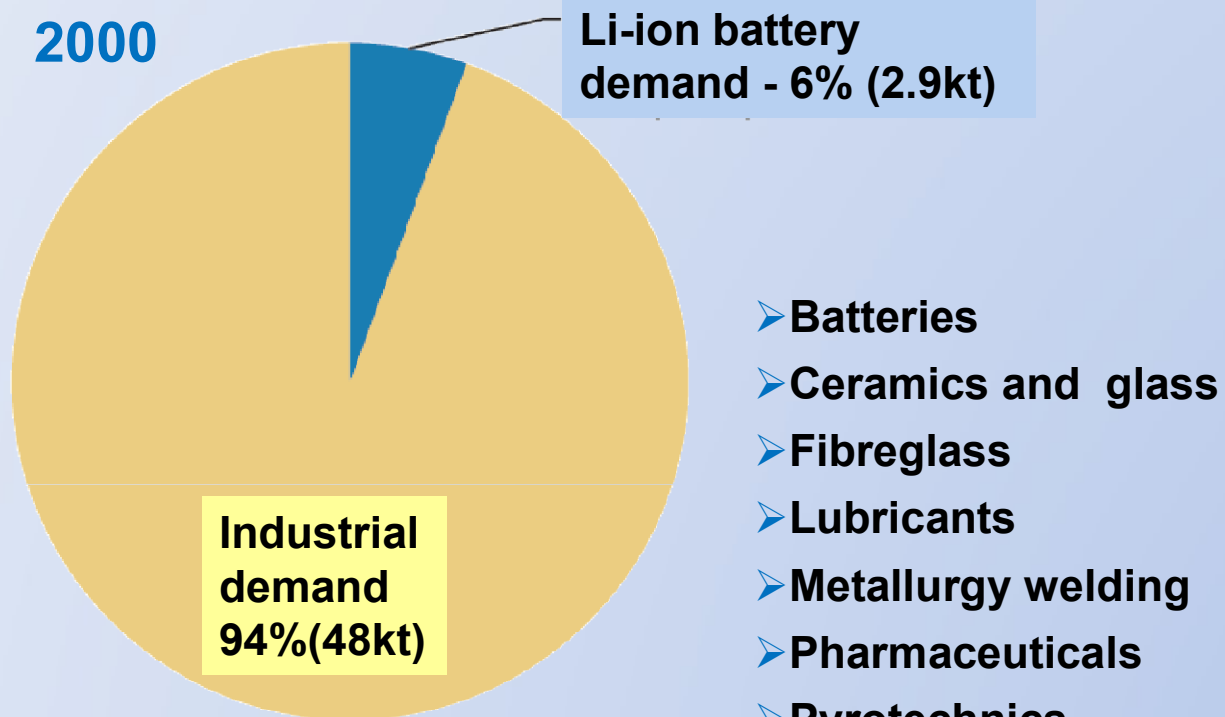
www.wired.com/story/dyson-electric-car/ 1 Oct 17



Pepini



Lithium demand



Source – Morgan Stanley Research March 2018



Lithium pricing and production costs – Who to believe?

- ❑ ***Production cost Hard Rock spodumene is US\$5-6,000 per tonne of Lithium Carbonate Equivalent(LCE)***
- ❑ ***Production cost Lithium Brine US\$2,500 to US\$3,500 per tonne of LCE***
- ❑ ***Morgan Stanley predict LCE selling price US\$6,000 per tonne by 2025***
- ❑ ***Deutsche Bank predict price to stay above US\$10,000 per tonne through to 2025***
- ❑ ***Soft Brine production remains profitable***



Lithium Brine



Hard Rock Spodumene

Pepini



Source – Morgan Stanley Research March 2018 Source – Deutsche Bank Markets Research March 2017

Why Lithium Brine in Argentina?

- ❑ Argentine government targeting Lithium super power status
- ❑ *Conservatively, Argentina will represent about half of global lithium production by 2020 - Mining Secretary Daniel Meilan Mar 2017*
- ❑ Argentina holds 23% global lithium resources and 19% of global high grade resources

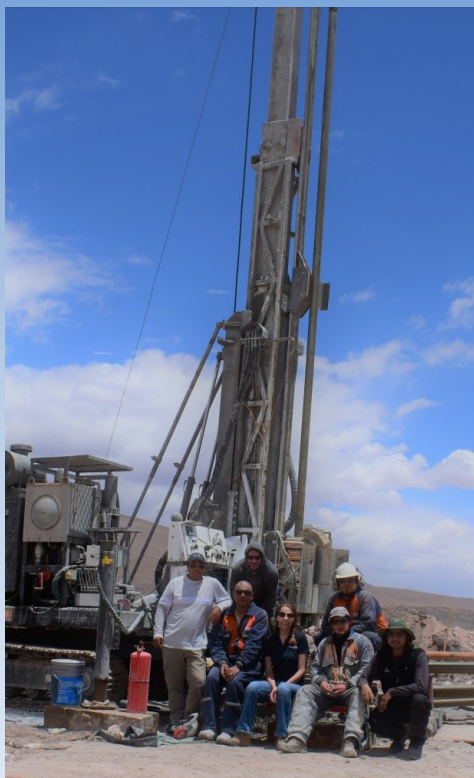


Pepinini



PepinNini in Argentina

- ✓ *On the ground*
- ✓ *In the know*
- ✓ *Talking to people*



PNN team drilling



PNN team community engagement



PNN team with Salta Mining Secretary

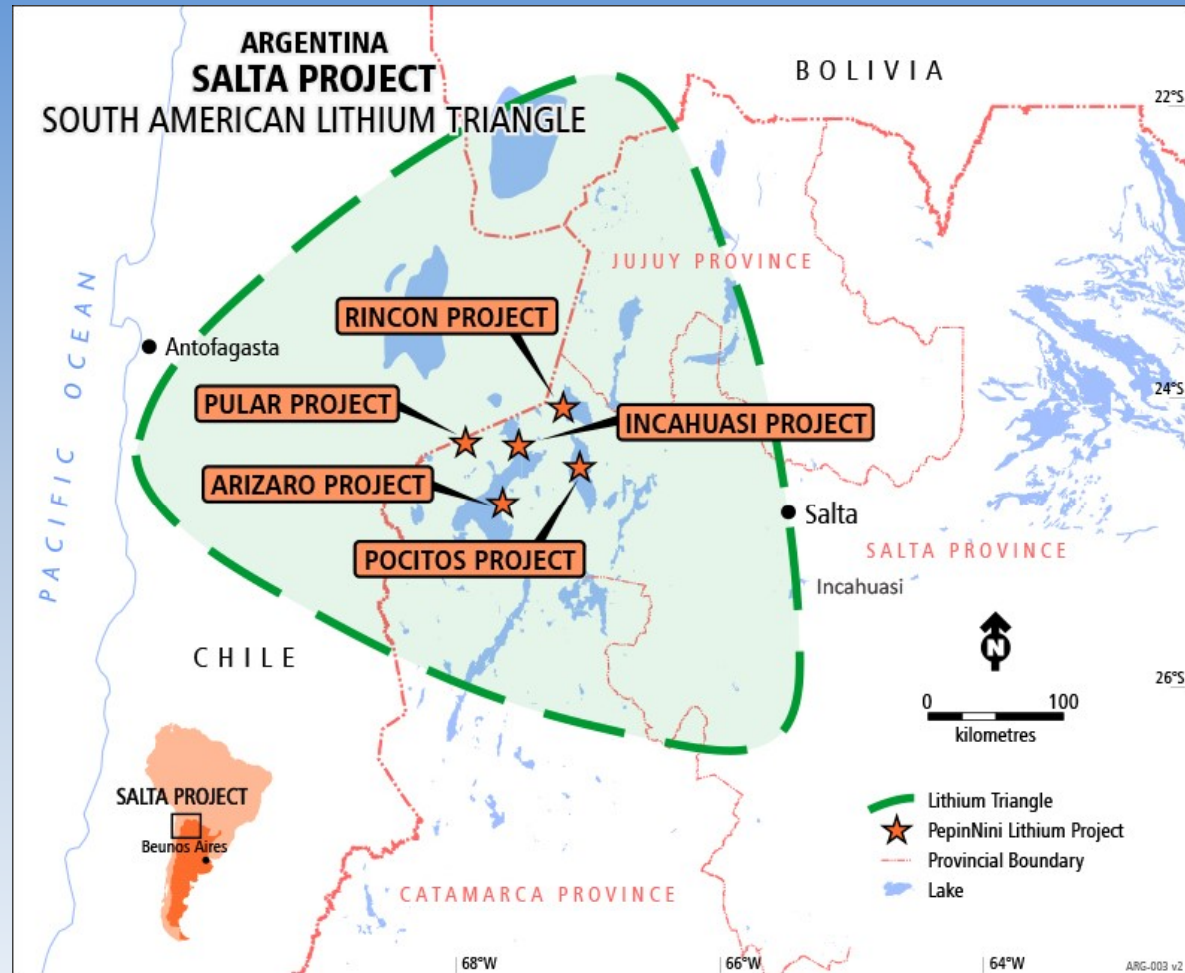


PepinNini



Salta Lithium Brine Project – on the ground

- 11 mining leases(minas) of 23,796 hectares
- All within the Lithium triangle
- Good infrastructure – gas, power & railway

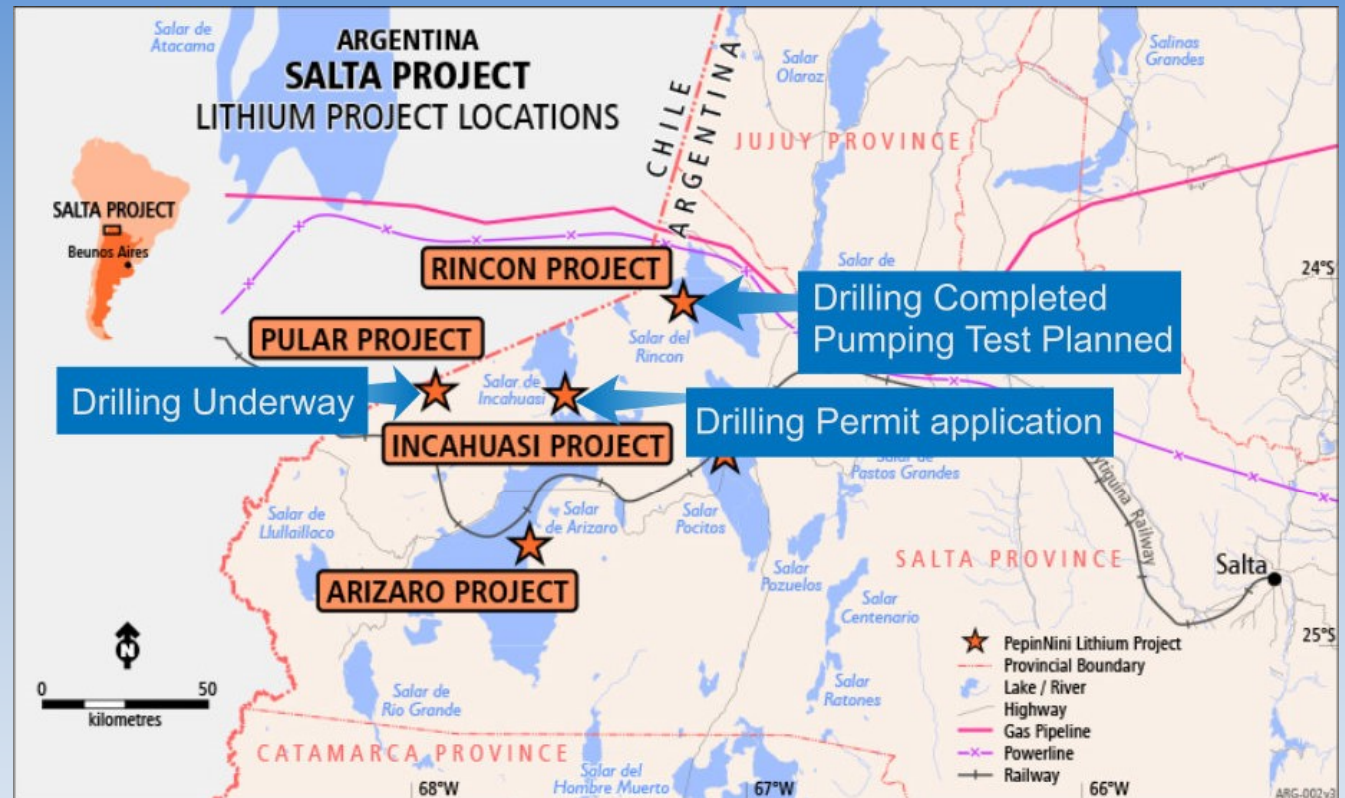


PepinNini



Exploration Activity – on the ground

- Argentine exploration team – local with expertise
- Drill testing and sampling program on-going
- Results to come



PepinNini



Salar del Rincon Project

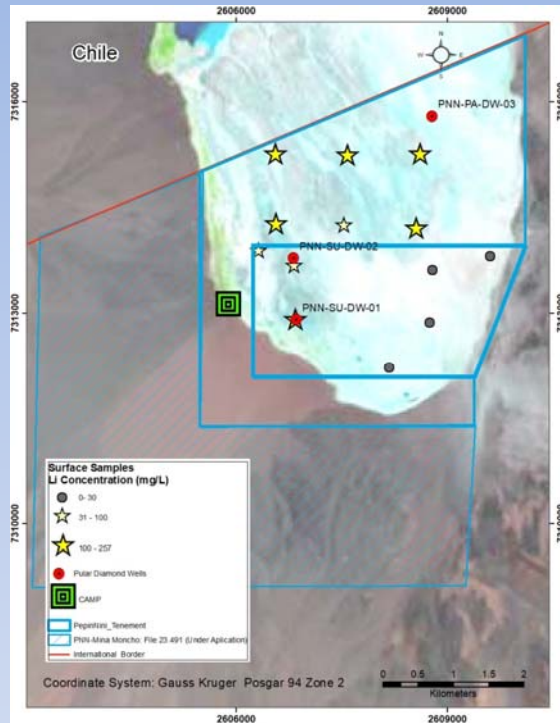
- ❑ Two boreholes drilled Dec 17
- ❑ Highly porous sediments in aquifer up to 100m in thickness
- ❑ Viable lithium grades of 313milligrams/litre



Pepinini



Salar de Pular Project



- ❑ PNN tenure 100% Salar in Argentina
- ❑ Previous surface samples indicate viable brine grades up to 257mg/l
- ❑ 4 boreholes recently completed
- ❑ Brine close to surface with strong flow
- ❑ Resource statement in preparation

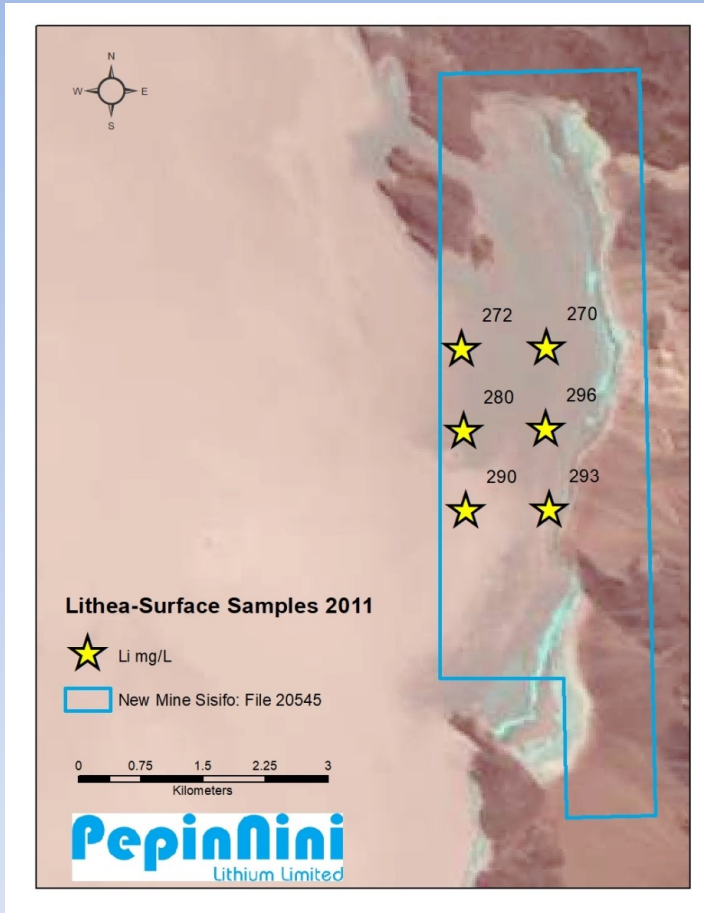


Pepiñini



Salar de Incahuasi Project

- Recent acquisition via tenement swap
- Surface samples indicate viable lithium grades up to 293mg/l
- Drilling permits in application



Pepinini



In the know – Aiming for production by 2020 - 2021

- ❑ *Local knowledge and contacts*
- ❑ *Understanding hydrogeology and best use to production*
- ❑ *Evaporation and concentration tried and true production method*

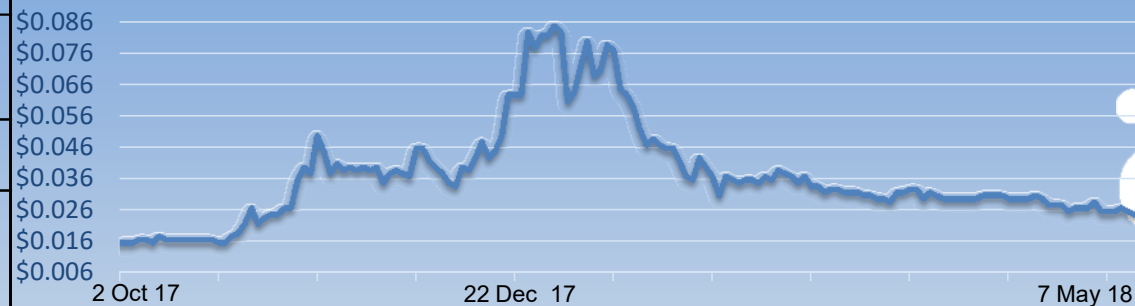


Pepinini



Where we are

2018	
Tradable Shares on issue (8 May 18)	527,168,689
Options on issue (unquoted 8 May 18)	8,000,000
No. Shareholders (8 May 18)	3,308
Top 20 shareholders (8 May 18)	42.6 % of capital
Exploration expenditure 1 Jan 2018 to 31 Mar 2018	\$0.8m



Pepinini



PepinNini Board of Directors



Rebecca Holland-Kennedy

B.Sc., B.Arts, MAusIMM,
GAICD

**Executive Chairman
and Managing
Director,
Co-founder**

Geologist with more than 35 years experience in exploration and management.



Sarah Clifton-Brown

B.Arts,(Hons) Accountancy,
FCCA, GAICD

**Executive Finance
Director**

Fellow of the Chartered Certified Accountants with more than 14 years experience in company administration, financial reporting and analysis.



Phil Clifford

B.Sc., MAusIMM

**Non- Executive
Director -
Exploration
Manager during
FY17**

Geologist with more than 25 years experience in exploration management within Australia; 15 years with Rio Tinto.



Justin Nelson

B.Arts(Jurisprudence)LLB

Company Secretary

Lawyer, previously ASX State Manager, SA and Manager, Listings (Adelaide). He has extensive knowledge of ASX listing rules and is a Special Council with DMAW Lawyers.



Ignacio Celorrio

LLB/JD Partner

**Director
PepinNini SA**

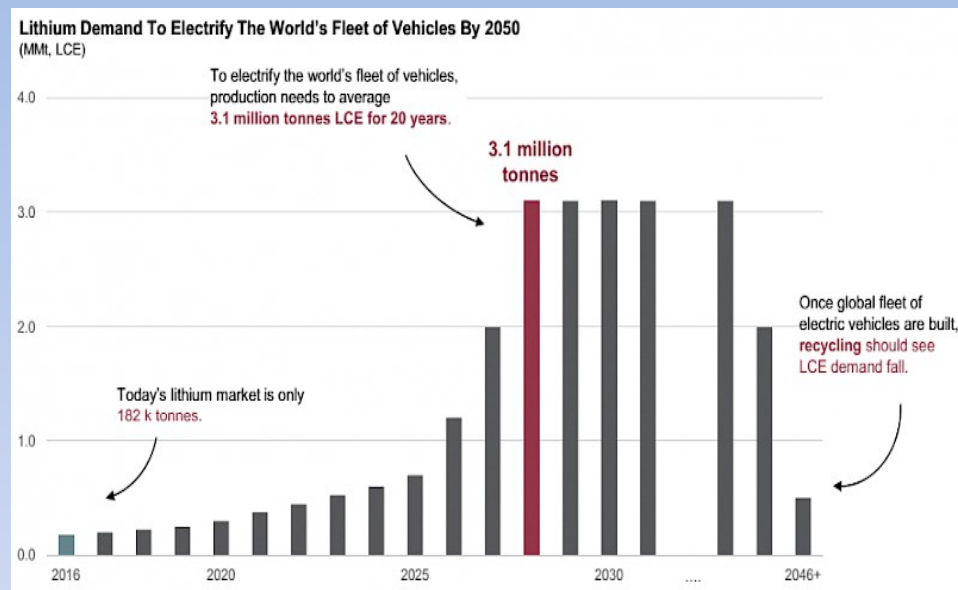
Lawyer with Quevedo Abogados Buenos Aires. *Distinguished Leading Individual* in areas of Energy and Natural Resources in Argentina

PepinNini



The PepinNini Lithium Advantage - on the ground

- ❑ **Commodity demand high**
- ❑ **Soft brine advantage remains profitable**
- ❑ **Experience in Argentina means efficiency and opportunity to come**



Source - Dr David Deak Lithium Americas(LAC)
Sep 2017(formerly Tesla engineer)

PepinNini



Thank you



Disclaimer and Competent Persons Statement

- The information in this presentation is published to inform you about PepinNini Lithium Limited and its activities. All reasonable effort has been made to provide accurate information, but we do not warrant or represent its accuracy and we reserve the right to make changes to it at any time without notice.
- To the extent permitted by law, PepinNini Lithium Limited accepts no responsibility or liability for any losses or damages of any kind arising out of the use of any information contained in this presentation. Readers are advised to consult a stockbroker or professional adviser before making any investment decisions.
- The information in this presentation on the Salta Lithium project has been prepared with information compiled by Marcela Casini, MAusIMM. Marcela Casini is the Exploration Manager-Argentina of PepinNini Lithium Limited and has sufficient experience which is relevant to the style of mineralisation and type of deposit under consideration to qualify as a Competent Person as defined in the 2012 edition of the "Australasian Code for Reporting of Exploration Results, Mineral Resources and Ore Reserves". Marcela Casini consents to the inclusion in the report of the matters based on her information in the form and context in which it appears.



We explore, we persist, we find

- ✓ On the ground

- ✓ In the know

- ✓ Talking to people... getting it done